

© 2014 Pearson Education, Inc. or its affiliate(s). All rights reserved.



ABOUT ARTMOSFERA



ARTmosfera is a cultural association that develops its main activity in rural areas, particularly in Los Monegros region (Aragon, Spain).

With the main objective of dynamizing the rural environment, we focus our activities around the world of performing arts, culture and sport through the organization of activities, shows and the offer of creative residences, training, workshops, meetings, ...

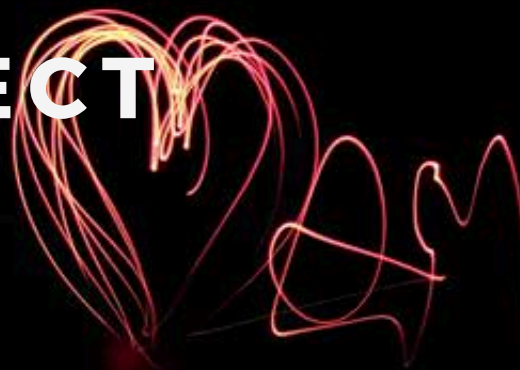
**OUR AIM IS TO REVITALIZE
RURAL AREAS THROUGH
ARTISTIC ACTIVITIES**



Follow us @artmosferarural



ABOUT THE PROJECT



MapMyArt is a multidisciplinary artistic youth exchange whose purpose is to create an extensive network of young European artists that will be visible through a digital map that they will create together.

An artistic co-living experience in a rural environment that will enhance the creativity of the participants with the aim of creating networks beyond their borders thanks to the use of digital technologies.

A network that will allow them to feel accompanied in their artistic career, that will empower them thanks to the visibility that the map will give them and that will encourage them to create synergies and collaborative projects with young people from other countries.

This project pursues following **objectives**:

- Promote creativity through artistic entrepreneurship.
- To establish values of respect, equality and tolerance among all people.
- To promote intercultural dialogue while reinforcing European values and identity.
- Promote a healthy, sustainable and more environmentally friendly lifestyle.
- Encourage a responsible use of new technologies to facilitate greater cooperation among young people.

The exchange will take place in the facilities of the ARTmosfera Association, an artistic space located in the region of Los Monegros (Aragón). A place that promotes the decentralization of culture, demonstrating that quality artistic projects are also possible far from the cities.

PRACTICAL INFO



Participants

The project will involve 24 young people aged 18-30 living in Spain, Latvia, Czech Republic and Romania, with:

- Artistic knowledge and ambitions
- Interest in rural areas as a place for creative, personal and/or professional development
- Interest in creative activities
- Interest in healthy and sustainable lifestyles
- Willingness to step out of their comfort zone for a mind-opening experience
- Interest in other cultures

Accommodation

ARTmosferas' rural artistic residency is an old agriculture farm transformed in a space to develop artistic and creative projects.

It is an energy self-sufficient space where almost everything is built through upcycling. There is NO WIFI.

Participants are going to stay in shared rooms (4 to 8 beds per room) and will share bathrooms. The food will be mainly vegetarian. Participants will be involved in cooking.

Environment

The region where we are located reaches high temperatures in summer and is subject to temperature fluctuations during the day, so we recommend that you bring warm sweatshirts for the evening.

It is also important that you bring mosquito repellent spray and sunscreen.

TRAVEL INFO



Arrival and departure

Arrival: 07/06/2025 after 14h

Departure: 13/06/2025 before 10h

Travel cost limit

Travel expenses will be covered up to a limit calculated by the Erasmus+ Program.

- Spain: 56€ (Green Travel - Bus or train)
- Romania: 395€
- Latvia: 395€
- Czech Republic: 309€

Costs will be reimbursed once you are back home and have send all the travel tickets and invoices.

What to bring

- Valid Passport or ID card
- European Health Insurance Card
- Sleeping bag
- Towel and toiletries
- Short- and long-sleeved clothing (might be hot during the day and cold at night)
- Sunglasses, hat
- Laptop or ipad (if you have/can, not mandatory)
- National food/drinks for intercultural night

OUR FACILITIES

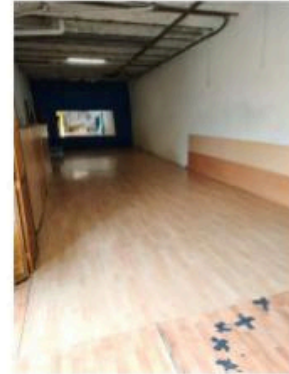


The House



Kitchen /
Dining
Room

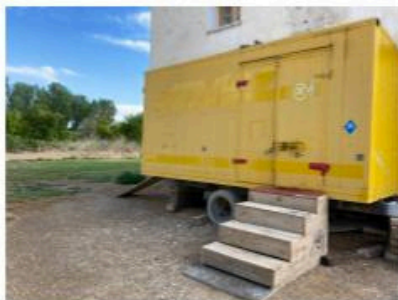
Training
Space



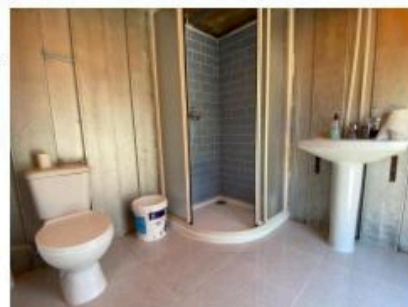
Rooms



Chill out



Bathrooms





ARTmosfera is located in the region of Los Monegros, surrounded by villages of less than 800 inhabitants. Its closest "big" village is Grañen, 6km far, where you will find supermarket, bars, banks, medical center.

Huesca (province capital) is just 20 minutes far, and Zaragoza 45 minutes. They are conected by bus and train.

You can reach Grañen by train from Madrid, Barcelona, Lleida or Zaragoza. Please check train times at www.renfe.com

If you are coming from Barcelona or Madrid, you have this searching option available at Renfe's website: Madrid to Zaragoza + new search Zaragoza to Grañen / Barcelona to Zaragoza or to Lleida + new Search Zaragoza or Lleida to Grañen

Find us in google maps:
<https://g.page/artmosferarural?share>

DO YOU HAVE OTHER QUESTIONS?

Please do not hesitate to contact us
asociacion@artmosfera.es
+34 610 961 292
www.artmosfera.es

www.mapmyart.com